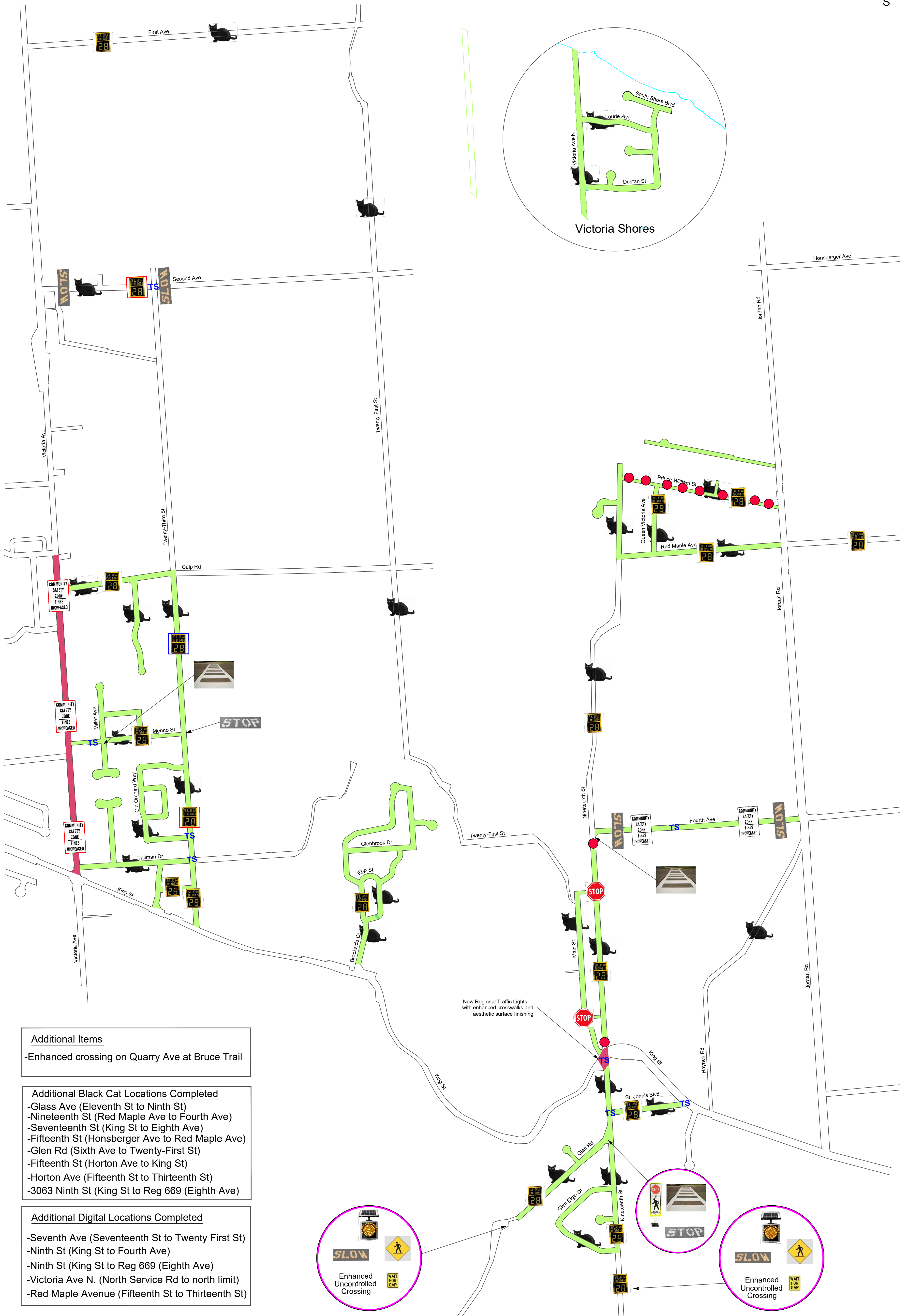
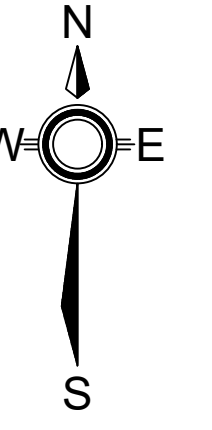


Traffic Calming Measures

- Ward 3 -



- Additional Items**
- Enhanced crossing on Quarry Ave at Bruce Trail
- Additional Black Cat Locations Completed**
- Glass Ave (Eleventh St to Ninth St)
 - Nineteenth St (King St to Fourth Ave)
 - Fifteenth St (Honsberger Ave to Red Maple Ave)
 - Glen Rd (Sixth Ave to Twenty-First St)
 - Fifteenth St (Horton Ave to King St)
 - Horton Ave (Fifteenth St to Thirteenth St)
 - 3063 Ninth St (King St to Reg 669 (Eighth Ave))
- Additional Digital Locations Completed**
- Seventh Ave (Seventeenth St to Twenty First St)
 - Ninth St (King St to Fourth Ave)
 - Ninth St (King St to Reg 669 (Eighth Ave))
 - Victoria Ave N. (North Service Rd to north limit)
 - Red Maple Avenue (Fifteenth St to Thirteenth St)

Legend

- | | | | | | | | |
|--|-------------------------------|--|--------------------------------|--|--------------------------------------|--|-----------------------------------|
| | Enhanced Crosswalk | | Painted "SLOW" Decal | | Existing 40km/h Area Speed Reduction | | Completed Traffic Study |
| | Solar Flasher | | Painted "STOP" Decal | | Long Term Digital Speed Sign | | "STOP for Pedestrian" Reboundable |
| | Pedestrian Crossing | | Regional Upgrades | | Digital Speed Sign | | Black Cat Radar |
| | Curb Extensions/
Bump Outs | | Regional Community Safety Zone | | Future Long Term Digital Speed Sign | | NEW All-Way |
| | | | Community Safety Zone | | | | |

