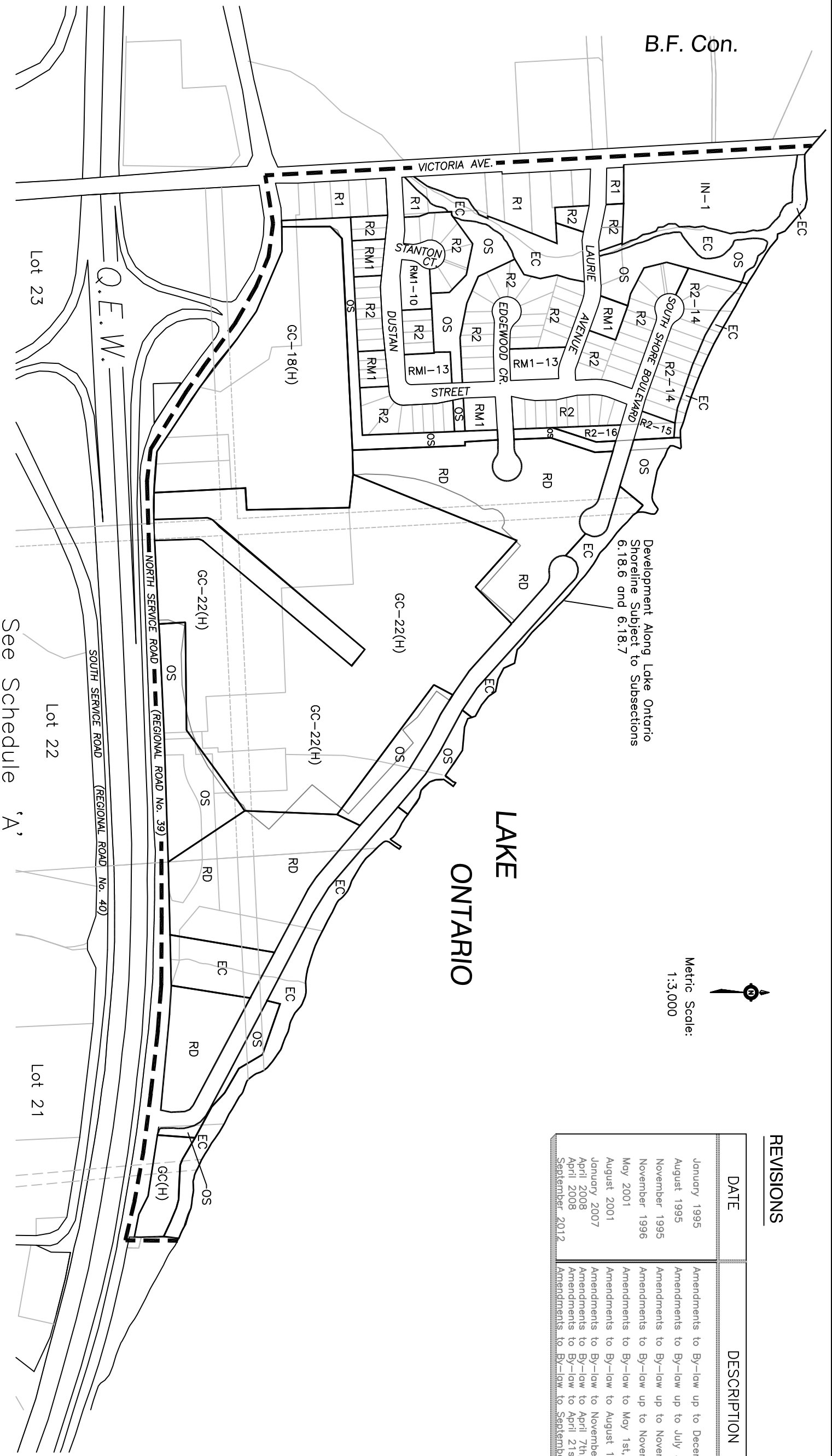


REVISIONS

DATE	DESCRIPTION
January 1995	Amendments to By-law up to December 31st, 1994.
August 1995	Amendments to By-law up to July 31st, 1995.
November 1995	Amendments to By-law up to November 30th, 1995.
November 1996	Amendments to By-law up to November 30th, 1996.
May 2001	Amendments to By-law to May 1st, 2001.
August 2001	Amendments to By-law to August 10th, 2001.
January 2007	Amendments to By-law to November 1st, 2006.
April 2008	Amendments to By-law to April 7th, 2008.
April 2008	Amendments to By-law to April 21st, 2008.
September, 2012	Amendments to By-law to September 17th, 2012.



Metric Scale:
1:3,000



See Schedule 'A'

B.F. Con.

Development Along Lake Ontario
Shoreline Subject to Subsections
6.18.6 and 6.18.7

LAKE
ONTARIO

See Schedule 'A'

See Schedule 'A'

TOWN OF LINCOLN

Zoning By-law No. 93-14-Z1

Schedule 'A4'

PRUDHOMMES

This is Schedule 'A4' to By-law No. 93-14-Z1 passed this 15th day of February, 1993.

Mayor: Ray A. Konkle

Clerk: Kyle S. Kruger

OFFICE CONSOLIDATION

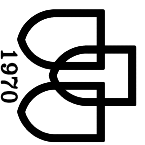
This is an Office Consolidation of Zoning By-law No. 93-14-Z1 for the Corporation of the Town of Lincoln as passed by Council on February 15th, 1993 and as amended by the Ontario Municipal Board in an order dated October 30th, 1995.

For accurate reference, recourse should be made to the original Zoning By-law No. 93-14-Z1 and amending By-laws.

ZONE LEGEND

- A — Agricultural Zone
- ER — Estate Residential Zone
- HR — Hamlet Residential Zone
- R1 — Residential 1 Zone
- R2 — Residential 2 Zone
- R3 — Residential 3 Zone
- RM1 — Residential Multiple 1 Zone
- RM2 — Residential Multiple 2 Zone
- RM3 — Residential Multiple 3 Zone
- RD — Residential Development Zone
- NC — Neighbourhood Commercial Zone
- GC — General Commercial Zone
- RUC — Rural Commercial Zone
- RC — Recreational Commercial Zone

- PI — Prestige Industrial Zone
- IN — Industrial Zone
- EI — Extractive Industrial Zone
- I — Institutional Zone
- OS — Open Space Zone
- EC — Environmental Conservation Zone
- Lands to Which Development Control of the Niagara Escarpment Commission Applies
- Central Business District
- Map Boundary



1970

CONSOLIDATED VERSION
September 2012